



# MesoDissection of Fibrous Tissue

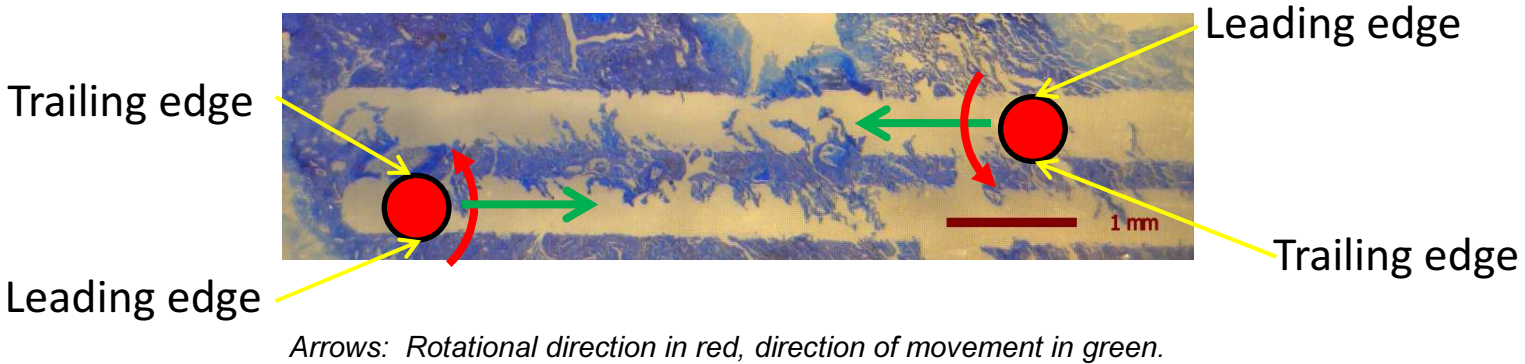


(Research Use Only)

## Overview:

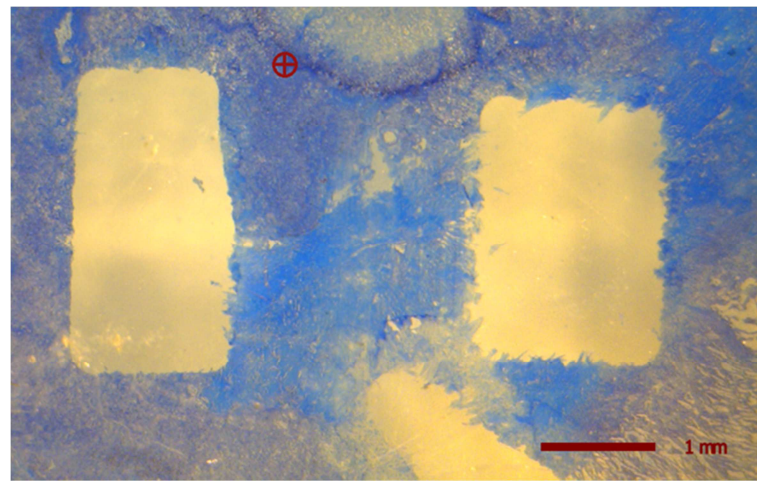
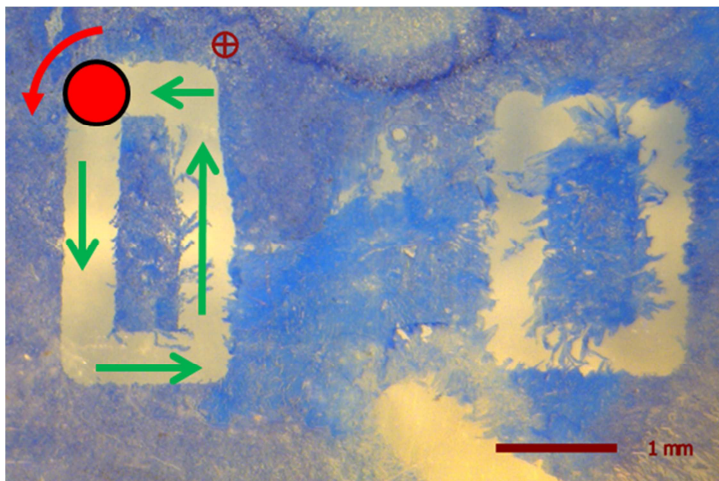
When dissecting fibrous tissue using AvanSci Bio's MesoDissection system, the leading edge of rotation of the mill blade typically cuts much cleaner than the trailing edge. This effect is similar to what is observed when using machine shop mills to cut materials such as plastic.

## Method:



Therefore we recommend first cutting the outer circumference of the Area Of Interest (AOI) in a counterclockwise path...

...then clean up the middle area.



## AvanSci Bio Technical Support:

Telephone 801-972-2377 (Monday – Friday, 8:30am to 5:30pm US MST)

E-mail [support@avanscibio.com](mailto:support@avanscibio.com)